

**SURVEY PLAN CERTIFICATION
PROVINCE OF BRITISH COLUMBIA**

PAGE 1 OF 2 PAGES

Your electronic signature is a representation that you are a British Columbia land surveyor and a subscriber under section 168.6 of the *Land Title Act*, RSBC 1996 c.250. By electronically signing this document, you are also electronically signing the attached plan under section 168.3 of the act.

**Simone
Porcellato
STR6SW**

c=CA, cn=Simone
Porcellato STR6SW, o=BC
Land Surveyor, ou=Verify
ID at www.juricert.com/
LKUP.cfm?id=STR6SW

1. BC LAND SURVEYOR: (Name, address, phone number)

AllTerra Land Surveying Ltd.

Simone Porcellato BCLS

2489 Main Street

West Kelowna

BC V4T 2H7

sim@allterrasurvey.ca

(250)452-9298

File: 310103-SD

Surveyor General Certification [For Surveyor General Use Only]

2. PLAN IDENTIFICATION:

Control Number: **160-859-8200**

Plan Number: **EPP107510**

This original plan number assignment was done under Commission #: **961**

3. CERTIFICATION:

Form 9 Explanatory Plan Form 9A

I am a British Columbia land surveyor and certify that I was present at and personally superintended this survey and that the survey and plan are correct.

The field survey was completed on: 2020 December 10 (YYYY/Month/DD) The checklist was filed under ECR#:
The plan was completed and checked on: 2020 December 18 (YYYY/Month/DD) 245284

None Strata Form S

None Strata Form U1 Strata Form U1/U2

Arterial Highway

Remainder Parcel (Airspace)

4. ALTERATION:

SUBDIVISION PLAN OF PART OF THE SOUTH 1/2 DISTRICT LOT 579, SDVD, EXCEPT PLANS KAP77336, KAP86178, KAP86917, KAP87090, KAP87918, EPP9619, EPP9638, EPP21863, EPP15721, EPP18670, EPP22118, EPP55798, EPP45189, EPP72926, EPP74481 AND EPP77194.



- LEGEND**
- Deline Control Monument Found
 - Deline Control Monument Proposed
 - Deline Control Monument Post SI
- Distances shown are horizontal, ground-level distances, in meters and decimals thereof.

All bearings are derived from GNSS observations to permanent control monuments (D52377 and D52378) and are related to the corner meridian of UTM Zone 11.

The UTM coordinate system and the WACD geoid accuracy information are based on the NAD83 datum and the geoid model GRS80 (EGM96). To compute grid distances, multiply the UTM coordinate values by the average combined factor of 0.999 982 414 104 474 6.

The UTM coordinate system and the WACD geoid accuracy information are based on the NAD83 datum and the geoid model GRS80 (EGM96). To compute grid distances, multiply the UTM coordinate values by the average combined factor of 0.999 982 414 104 474 6.

Distances shown are horizontal, ground-level distances, in meters and decimals thereof.

All bearings are derived from GNSS observations to permanent control monuments (D52377 and D52378) and are related to the corner meridian of UTM Zone 11.

The UTM coordinate system and the WACD geoid accuracy information are based on the NAD83 datum and the geoid model GRS80 (EGM96). To compute grid distances, multiply the UTM coordinate values by the average combined factor of 0.999 982 414 104 474 6.

Distances shown are horizontal, ground-level distances, in meters and decimals thereof.

All bearings are derived from GNSS observations to permanent control monuments (D52377 and D52378) and are related to the corner meridian of UTM Zone 11.

The UTM coordinate system and the WACD geoid accuracy information are based on the NAD83 datum and the geoid model GRS80 (EGM96). To compute grid distances, multiply the UTM coordinate values by the average combined factor of 0.999 982 414 104 474 6.

Distances shown are horizontal, ground-level distances, in meters and decimals thereof.

All bearings are derived from GNSS observations to permanent control monuments (D52377 and D52378) and are related to the corner meridian of UTM Zone 11.

The UTM coordinate system and the WACD geoid accuracy information are based on the NAD83 datum and the geoid model GRS80 (EGM96). To compute grid distances, multiply the UTM coordinate values by the average combined factor of 0.999 982 414 104 474 6.

Distances shown are horizontal, ground-level distances, in meters and decimals thereof.

All bearings are derived from GNSS observations to permanent control monuments (D52377 and D52378) and are related to the corner meridian of UTM Zone 11.

The UTM coordinate system and the WACD geoid accuracy information are based on the NAD83 datum and the geoid model GRS80 (EGM96). To compute grid distances, multiply the UTM coordinate values by the average combined factor of 0.999 982 414 104 474 6.

Distances shown are horizontal, ground-level distances, in meters and decimals thereof.

All bearings are derived from GNSS observations to permanent control monuments (D52377 and D52378) and are related to the corner meridian of UTM Zone 11.

The UTM coordinate system and the WACD geoid accuracy information are based on the NAD83 datum and the geoid model GRS80 (EGM96). To compute grid distances, multiply the UTM coordinate values by the average combined factor of 0.999 982 414 104 474 6.

Distances shown are horizontal, ground-level distances, in meters and decimals thereof.

All bearings are derived from GNSS observations to permanent control monuments (D52377 and D52378) and are related to the corner meridian of UTM Zone 11.

The UTM coordinate system and the WACD geoid accuracy information are based on the NAD83 datum and the geoid model GRS80 (EGM96). To compute grid distances, multiply the UTM coordinate values by the average combined factor of 0.999 982 414 104 474 6.

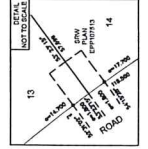
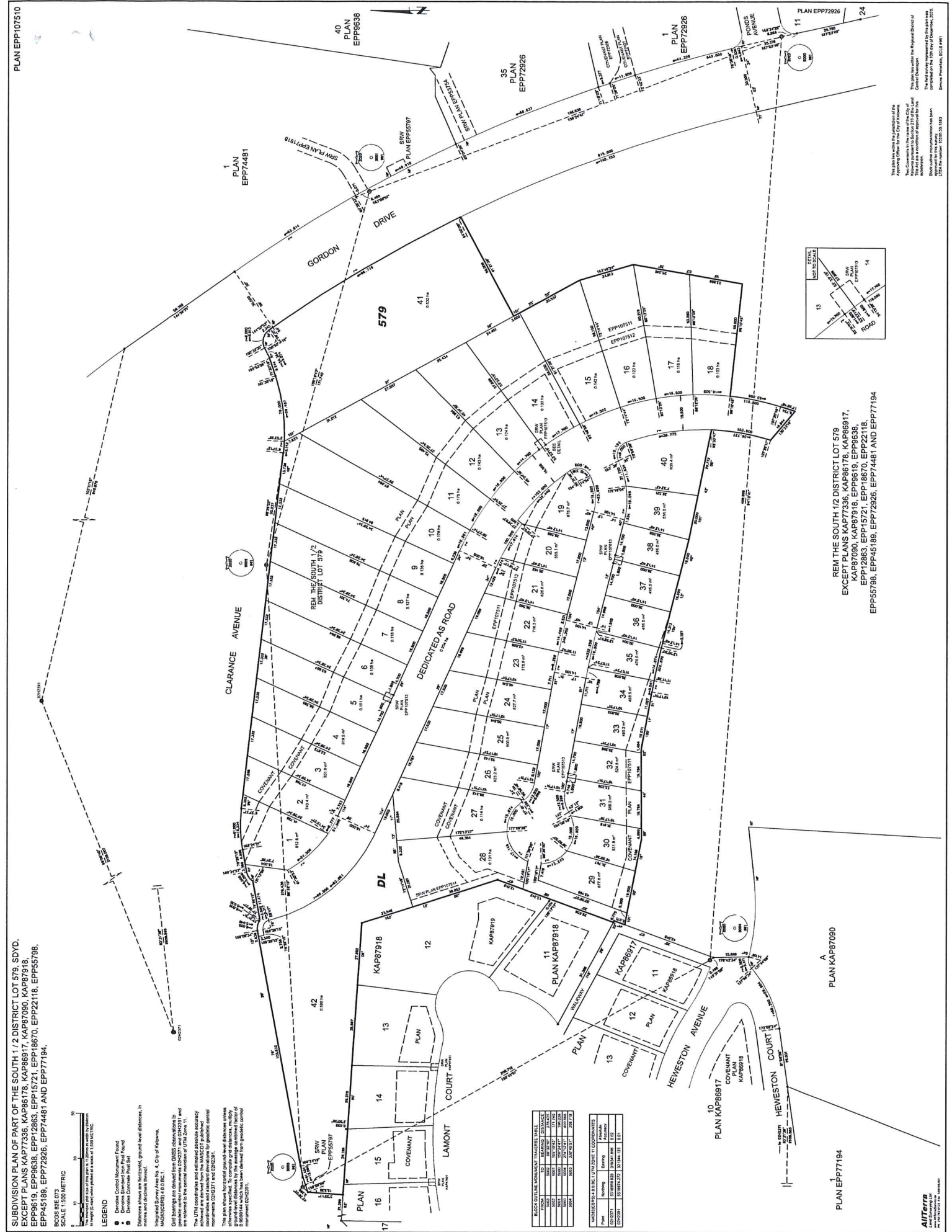
Distances shown are horizontal, ground-level distances, in meters and decimals thereof.

All bearings are derived from GNSS observations to permanent control monuments (D52377 and D52378) and are related to the corner meridian of UTM Zone 11.

The UTM coordinate system and the WACD geoid accuracy information are based on the NAD83 datum and the geoid model GRS80 (EGM96). To compute grid distances, multiply the UTM coordinate values by the average combined factor of 0.999 982 414 104 474 6.

Distances shown are horizontal, ground-level distances, in meters and decimals thereof.

All bearings are derived from GNSS observations to permanent control monuments (D52377 and D52378) and are related to the corner meridian of UTM Zone 11.



REM THE SOUTH 1/2 DISTRICT LOT 579
EXCEPT PLANS KAP77336, KAP86178, KAP86917,
KAP87090, KAP87918, EPP9619, EPP9638,
EPP12863, EPP15721, EPP18670, EPP22118,
EPP55798, EPP45189, EPP72926, EPP74481 AND EPP77194

This plan was prepared by the subdivision of the subject land shown on the plan and is subject to the provisions of the Act and the regulations thereunder. The Act was amended by the Provincial Government of Ontario in 1988. This Act was replaced by the present Act in 1990. The Act was amended by the Ontario Regulation 191/04 and the Act was amended by the Ontario Regulation 191/04. The Act was amended by the Ontario Regulation 191/04. The Act was amended by the Ontario Regulation 191/04.